

SOLPRO™ K1

PERFETTO CORNO DESIGN



La Martini

Gorgeous Palette of Sun

The SOLPRO™ K1 packs an unprecedented 20/40/60 watts of output into just less than 5 LBS design body! Despite its surprisingly light weight and unique shape, the SOLPRO pushes out more than enough light to replace conventional Solar lights.

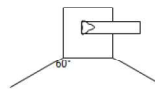
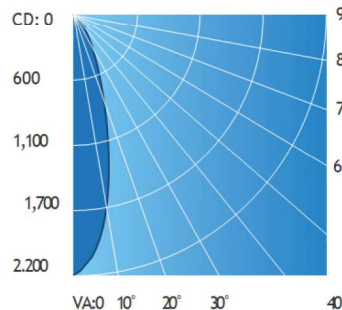
Sharing the same best in class LED-chip emitters used in SOLPRO's smaller sibling, the Fascio™, a gorgeous palette of saturated, mid-tone colors can be experienced. And of course, a true white is always available as well, not the unflattering mixed amber compromise found in other lights. Optionally, The single chip optic eliminates multi-colored shadows and creates a powerful, fully blended color wash wherever the designer needs it.

Smart programming in the SOLPRO™ K1 includes a stand-alone AUTO mode and doesn't need Manual intervention. Together with the Radar type motion sensor, ambient light sensor, Integrated Solar PV Cells, Ultra Light weight body, It makes the Solpro the most favourite solarLumiere deployed in EU and other nations.



All LEDs On
With 120° Diffuser

Polar Candela Distribution



Illuminance at a Distance

	Center Beam LUX	Beam Width
0.5m	8,667	0.3m
1.0m	2,167	0.6m
1.5m	963	0.9m
2.0m	542	1.2m
2.5m	347	1.4m
3.0m	241	



Environmental and Agency Compliance

1. Luminaire shall be compliant to FCC Class A Radiated and Conducted emissions for commercial and industrial use.
2. Luminaire shall be ETL listed to UL8750 for LED equipment used in lighting products.
3. Luminaire shall be CSA Rated C22.2#166-M1983 for LEDs for area illumination use.
4. Luminaire shall be CE Certified.
5. Luminaire shall be RoHS Compliant.
6. Luminaire shall be rated at IP65.

Thermal

1. Luminaire shall operate in an ambient temperature range of -22° F min to 113° F max (-30° C min to 45° C max).

Electrical

1. Luminaire shall be equipped with LiFePO4 / Li-Ion* Battery.
2. Luminaire shall consume no external power.

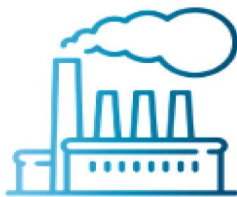
LED Emitters

1. Emitters shall be Lensed.
2. Peak color wavelengths/color temperatures shall be: Red – 625nm; Green – 527 nm; Blue – 453 nm; White – 6500K.
3. Lumen Maintenance shall be 80,000 hours B50 L70 at 45C (LM-79-08 Standard).

Applications



Medical &
Pharmaceutical



Industrial &
Manufacturing



Food & Beverage



Residential

Safety information.



WARNING!

Read the safety precautions in this manual before installing, operating or servicing this product.

The following symbols are used to identify important safety information on the product and in this manual:



Warning!

*Safety hazard.
Risk of severe
injury or death.*



Warning!

*Powerful light
emission. Risk of
eye injury.*



Warning!

*See user manual
for important
safety information.*



Warning!

*Hazardous voltage.
Risk of lethal or
severe electric shock.*



Warning!

*Hot surfaces
and fire
hazard.*



© 2018-2020 La Martini Sarl. Information subject to change without notice. La Martini and all affiliated companies disclaim liability for any injury, damage, direct or indirect loss, consequential or economic loss or any other loss occasioned by the use of, inability to use or reliance on the information contained in this manual. The La Martini logo, the La Martini name, e and all other trademarks in this document pertaining to services or products by La Martini or its affiliates and subsidiaries are trademarks owned or licensed by La Martini or its affiliates or subsidiaries. Citing our continuous Innovations backed by a strong R&D, the particulars mentioned in this document are subject to change without any further notice.