

SOLPRO™ AUTO

PERFETTO CORNO DESIGN



La Martini

Gorgeous Palette of Sun

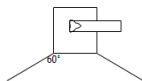
The SOLPRO™ AUTO packs an unprecedented 20/40/60/80/100 watts of output into just less than 15 LBS* design body! Despite its surprisingly light weight and unique shape, the SOLPRO AUTO pushes out more than enough light to replace conventional Solar lights with an Industry First whooping 160 Lumen / Watt Chipset.

Sharing the next generation best in class LED-chip emitters, as against 140 Lumen / Watt used in SOLPRO's smaller sibling, the Fascio™, a gorgeous palette of saturated, mid-tone colors can be experienced. And of course, a true white is always available as well, not the unflattering mixed amber compromise found in other lights. Optionally, The single chip optic eliminates multi-colored shadows and creates a powerful, fully blended color wash wherever the designer needs it.

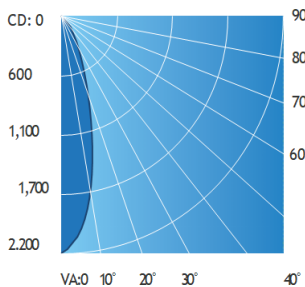


All LEDs On

With 120° Diffuser



Polar Candela Distribution



Illuminance at a Distance

Distance	Center Beam LUX	Beam Width
0.5m	8,667	0.3m
1.0m	2,167	0.6m
1.5m	963	0.9m
2.0m	542	1.2m
2.5m	347	1.4m
3.0m	241	

#Typical PCD

Smart programming in the SOLPRO™ AUTO includes a stand-alone AUTO mode and doesn't need Manual intervention. It has a Robotic ARM with dedicated solar Panel to clean the Panels Automatically.

Together with the Radar type motion sensor, ambient light sensor, Integrated Solar PV Cells, Ultra Light weight body, It makes the Solpro the most favourite solarLumiere deployed in EU and other nations.





Environmental and Agency Compliance

1. Luminaire shall be compliant to FCC Class A Radiated and Conducted emissions for commercial and industrial use.
2. Luminaire shall be ETL listed to UL8750 for LED equipment used in lighting products.
3. Luminaire shall be CSA Rated C22.2#166-M1983 for LEDs for area illumination use.
4. Luminaire shall be CE Certified.
5. Luminaire shall be RoHS Compliant.
6. Luminaire shall be rated at IP65.

Thermal

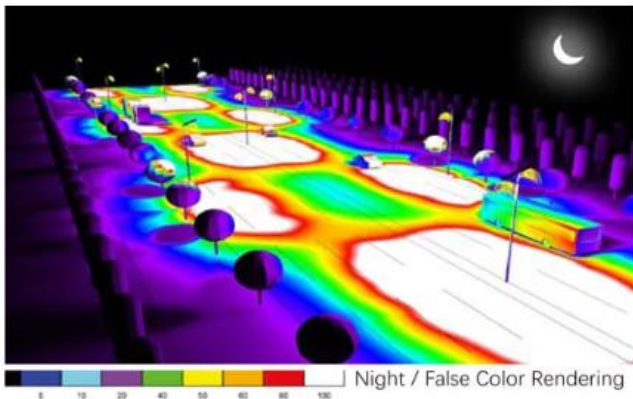
1. Luminaire shall operate in an ambient temperature range of -22° F min to 113° F max (-30° C min to 45° C max).

Electrical

1. Luminaire shall be equipped with LiFePO4 Battery.
2. Luminaire shall consume no external power.

LED Emitters

1. Emitters shall be Lensed.
2. Peak color wavelengths/color temperatures shall be: Red – 625nm; Green – 527 nm; Blue – 453 nm; White – 6500K.
3. Lumen Maintenance shall be 80,000 hours B50 L70 at 45C (LM-79-08 Standard).



Applications



Medical & Pharmaceutical



Industrial & Manufacturing



Food & Beverage



Residential

Model	LED Power	Reference Pictures	Description	Unit Price
		SOLPRO AUTO SERIES	Main Parameters	(EXW, ITALY) 100Pcs+

SP-A20 20W



1. Materials: High quality Die-cast Aluminum
2. Solar panel: 50W DC18V (High-efficiency Monocrystalline Silicon)
3. LED light: 20W (Bridgelux /Philips 5050 LED chip) + 150 x 80 beam angle
4. CCT (Correlated Color Temperature): 5700K. 3000-6500K (optional)
5. A grade New LiFePO4 Lithium battery: 230.4WH/18AH 2.8V
6. Luminous flux: 3200lm (160lm/w)
7. Work time: Continuously 3-5 rainy days, 12 hours per night
8. Control modes: Light / Timing / Microwave / Timing + Microwave control
9. Propositional mounting height: 6-8m
10. Lamp Size: 998 x 373 x 50mm
11. Certificates: CE, CSA C22.2, ETL, UL, IP65 ISO9001, 14001

US\$460

SP-A40 40W



1. Materials: High quality Die-cast Aluminum
2. Solar panel: 70W DC18V (High-efficiency Monocrystalline Silicon)
3. LED light: 40W (Bridgelux/Philips 5050 LED chip) + 140 x 80 beam angle
4. CCT (Correlated Color Temperature): 5700K. 3000-6500K (optional)
5. LiFePO4 Lithium battery: 460.8WH/36AH 12.8V
6. Luminous flux: 6400lm (160lm/w)
7. Work time: Continuously 3-5 rainy days, 12 hours per night
8. Control modes: Light / Timing / Microwave / Timing + Microwave control
9. Propositional mounting height: 7-9m
10. Lamp Size: 1233 x 373 x 50mm
11. Certificates: CE, CSA C22.2, ETL, UL, IP65 ISO9001, 14001

US\$550

SP-A60 60W



1. Materials: High quality Die-cast Aluminum
2. Solar panel: 90W DC18V (High-efficiency Monocrystalline Silicon)
3. LED light: 60W (Bridgelux/Philips x 5050 LED chip) + 150 x 80 beam angle
4. CCT (Correlated Color Temperature): 5700K. 3000-6500K (optional)
5. LiFePO4 Lithium battery: 614.4WH/48AH 12.8V
6. Luminous flux: 10800lm (180lm/w)
7. Work time: Continuously 3-5 rainy days, 12 hours per night
8. Control modes: Light / Timing / Microwave / Timing + Microwave control
9. Propositional mounting height: 8-10m
10. Lamp Size: 1543 x 373 x 50mm
11. CE, CSA C22.2, ETL, UL, IP65 ISO9001, 14001

US\$651

SOLPRO™ AUTO

PERFETTO CORNO DESIGN



La Martini

Model	LED Power	Reference Pictures	Description	Unit Price
		SOLPRO AUTO SERIES	Main Parameters	(CIF INDIA) 100Pcs+

SP-A80 80W



1. Materials: High quality Die-cast Aluminum
2. Solar panel: 110W DC36V (High-efficiency Monocrystalline Silicon)
3. LED light: 80W (Bridgelux 5050 LED chip) + 150 x 80 beam angle
4. CCT (Correlated Color Temperature): 5700K. 3000-6500K (optional)
5. LiFePO4 Lithium battery: 691.2WH/54Ah 12.8V
6. Luminous flux: 12800lm (160lm/w)
7. Work time: Continuously 3-5 rainy days, 12 hours per night
8. Control modes: Light / Timing / Microwave / Timing + Microwave control
9. Propositional mounting height: 8-10m
10. Product size: 1863 x 373 x 50mm
11. Certificates: CE, CSA C22.2, ETL, UL, IP65 ISO9001, 14001

US\$705

SP-A100 100W



1. Materials: High quality Die-cast Aluminum
2. Solar panel: 140W DC36V (High-efficiency Monocrystalline Silicon)
3. LED light: 100W (Bridgelux 5050 LED chip) + 140 x 70 beam angle
4. CCT (Correlated Color Temperature): 5700K. 3000-6500K (optional)
5. LiFePO4 Lithium battery: 768WH/60ah 12.8V =
6. Luminous flux: 18000lm (180lm/w)
7. Work time: Continuously 3-5 rainy days, 12 hours per night
8. Control modes: Light / Timing / Microwave / Timing + Microwave control
9. Propositional mounting height: 9-12m
10. Product size: 2200 x 373 x 50mm
11. Certificates: CE, CSA C22.2, ETL, UL, IP65 ISO9001, 14001

US\$760

Remark:

1. Price term: EXW, Italy. **Minimum Order Quantity : 100 pieces**
2. Payment terms: Formal order 100% before production.
3. The validity of price: 30 days.
4. Lead time: about 45-60 workdays after receiving the payment.
5. Above price without pole.
6. Warranty: 3 years for the light.





Safety information.



WARNING!

Read the safety precautions in this manual before installing, operating or servicing this product.

The following symbols are used to identify important safety information on the product and in this manual:



Warning!

Safety hazard.
Risk of severe injury or death.



Warning!

Powerful light emission.
Risk of eye injury.



Warning!

See user manual for important safety information.



Warning!

Hazardous voltage.
Risk of lethal or severe electric shock.



Warning!

Hot surfaces and fire hazard.

Microwave sensor

Philips Led light

Support

LiFePO4 battery

All die-cast aluminum lamp housing

Mono Solar panel



3 YEAR WARRANTY

Revised Date: 2023-05-16

© 2022-2023 La Martini Sarl. Information subject to change without notice. La Martini and all affiliated companies disclaim liability for any injury, damage, direct or indirect loss, consequential or economic loss or any other loss occasioned by the use of, inability to use or reliance on the information contained in this manual. The La Martini logo, the La Martini name, e and all other trademarks in this document pertaining to services or products by La Martini or its affiliates and subsidiaries are trademarks owned or licensed by La Martini or its affiliates or subsidiaries. Citing our continuous Innovations backed by a strong R&D, the particulars mentioned in this document are subject to change without any further notice.